

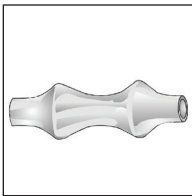


## ROLLER SUPPORTS and CPVC HANGERS

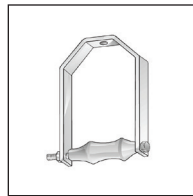
### 600 Series

Globe Rollers and Sockets work together to hang and support pipelines that may have horizontal and vertical movement. Made from cast iron rollers and carbon steel yokes, our Roller Supports can handle movement due to expansion and contraction.

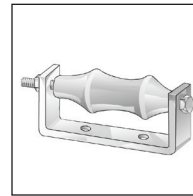
Globe Pipe Hanger Products, Inc. carries a complete line of UL listed, CPVC Hangers used primarily in the fire protection industry. All our 600 Series support straps are made of pre-galvanized carbon steel and are Underwriter's Laboratories approved for the support of CPVC piping.



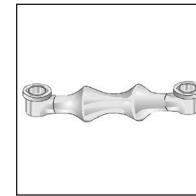
Model No. 600  
Cast Iron Pipe Roller



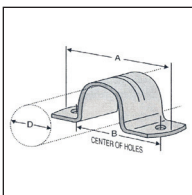
Model No. 601  
Adjustable Roller Hanger  
MSS-SP-69



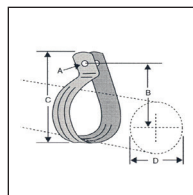
Model No. 602  
Roller Support Chair Type



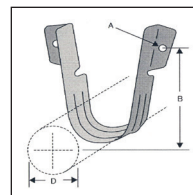
Model No. 603  
Two Rod Type Roller Hanger



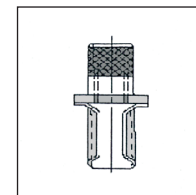
Model No. 623  
CPVC Two-Hole  
Strap



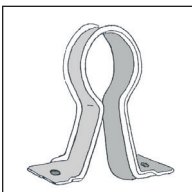
Model No. 624  
CPVC One-Hole Wrap  
Around Strap



Model No. 625  
CPVC Two-Hole 90  
Degree Side Mount



Model No. 626  
CPVC Surge Ring  
Hanger



Model No. 627  
CPVC Stand-Off  
Hanger



14601 Industrial Parkway • Cleveland, Ohio 44135  
216.362.6300 • (FAX) 216.267.6884  
Specification data sheets are available  
on [www.globepipehanger.com](http://www.globepipehanger.com)

