

SILVERHAWK TOP BEAM CLAMPS

OUR STRONGEST CLAMPS
FOR FIRE SPRINKLERS AND PIPE SUPPORT

NOW AVAILABLE IN STAINLESS STEEL



SilverHawk Top Beam Clamps are our **strongest, lightweight** top beam clamps. Made from cold rolled steel with a zinc plated finish, they are rust and corrosion resistant. These super strong SilverHawk clamps meet UL and FM testing requirements. Zinc finish aesthetically works with plated rods and plated swivel ring hangers.

SilverHawk Top Beam Clamps are now available in stainless steel for building needs in highly corrosive environments. They are strong and durable like all SilverHawk parts and provide long term maintenance saving due to the corrosion resistance of stainless steel.

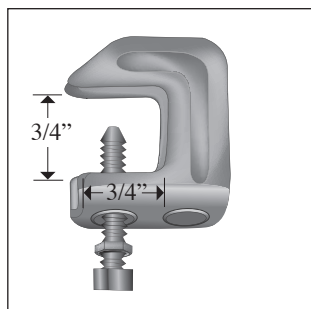
Tested by industry professionals, **SilverHawk installation is quick and easy.** Their unique counter balance design makes it easy to “spin” them onto threaded rods so installation goes faster. The open back shape provides visual verification during installation.



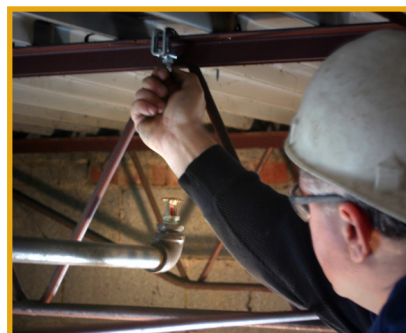
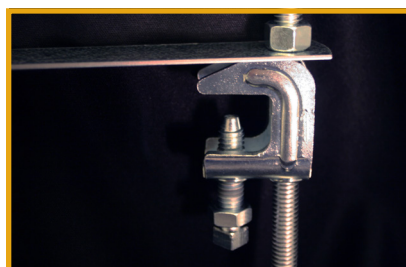
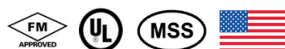
- Made in USA.
- Supports 3/8" rod – metric also available
- 90° angle fits I-beam or T-bar up to 3/4" thick
- Extruded tap holes meet FM Approvals requirements
- Accommodates retaining strap usage
- Competitively priced domestic part replaces the need to carry both domestic and import inventories
- Comes with a plated hardened cup point set screw and lock nut

APPROVALS

- UL listed for top beam
- FM approved for NFPA 13, 4" maximum rated pipe size
- Manufacturers Standardization Society SP-69, Type 19 & 23
- Federal Specification WW-H-171E
- Stainless Steel clamp not UL listed or FM approved



Model #103-101S



14601 INDUSTRIAL PKWY | CLEVELAND, OH 44135 USA
PHONE: 216.362.6300 FAX: 216.267.6884
E-MAIL: SALES@GLOBEPIPEHANGER.COM

