

OUR SUPERIOR PERFORMANCE PRODUCTS NOW IN STAINLESS STEEL

PIPE SUPPORT, CLAMPS AND HANGERS FOR STRUCTURAL NEEDS IN ANY CORROSIVE ENVIRONMENT



The strength of SilverHawk, Max Mechanical and Globe Pipe Hanger Products is now available in stainless steel for support in corrosive conditions. From coastal to chemical, these products resist wet conditions and damp environments, while retaining their appearance and preserving the aesthetic of the installation.

Solving the problem of corrosion, the stainless steel products provide long term maintenance and replacement savings. They are strong and durable, with the same innovative design for the best in support and keeping pipes secure.

- Corrosion Resistant
- Long Term Maintenance Savings
- Quick and Easy Installation
- Fire and Heat Resistant
- Strong and Durable

Our stainless steel pipe supports, clamps and hangers withstand exposure to moisture, chemicals and solvents. Ranging from food and beverage to automotive and aerospace, to pharmaceuticals and health care, anywhere you need a non-corrosive piece.

- Food and Beverage Production
- Automotive and Aerospace
- Marine and Coastal Facilities
- Health Care Institutions
- Water Treatment Plants and Structures
- Chemical and Electrical Plants
- Pharmaceutical and Industrial Production
- Power Generation



14601 INDUSTRIAL PKWY | CLEVELAND, OH 44135 USA

PHONE: 216.362.6300 FAX: 216.267.6884

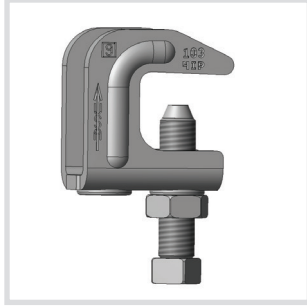
E-MAIL: SALES@GLOBEPIPEHANGER.COM





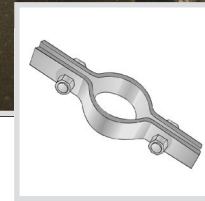
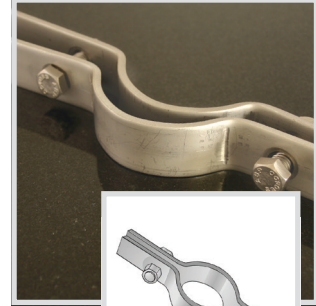
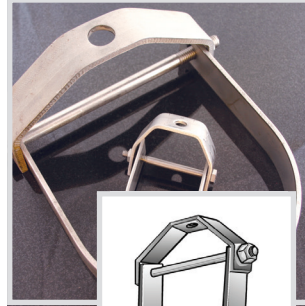
OUR TOP PERFORMING DESIGNS, NOW AVAILABLE IN STAINLESS STEEL

SILVERHAWK TOP BEAM CLAMPS



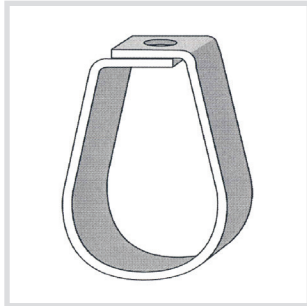
- Made in USA
- Supports 3/8" Rod – Metric Also Available
- 90° Angle Fits I-Beam or T-Bar up to 3/4" Thick
- Accommodates Retaining Strap Usage
- Comes with a Stainless Steel Cup Point Set Screw and Lock Nut

MAXMECHANICAL CLEVIS HANGERS AND RISER CLAMPS



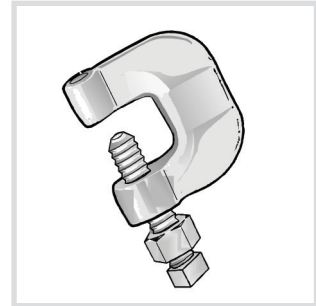
- Made in USA
- Designed to Stabilize and Secure
- Available in 1/2" through 12" Pipe Sizes
- Re-Engineered Design

BAND HANGERS



- Made in USA
- Formed in One Piece, Giving Double Thickness of Stock
- Vertical Adjustment of 5/8" to 2"
- Locked Nut Position Prevents Loosening
- Available in 1/2" through 8" Pipe Sizes

C-CLAMPS



- Made in USA
- 3/8" through 7/8" Rod Sizes
- Designed for Structural Attachment of Hanger Rod to Bottom Flange
- Comes with a Stainless Steel Cup Point Set Screw and Lock Nut



Made in USA

14601 INDUSTRIAL PKWY | CLEVELAND, OH 44135 USA

PHONE: 216.362.6300 FAX: 216.267.6884

E-MAIL: SALES@GLOBEPIPEHANGER.COM

